

## ► Brackets for acoustic wall panels

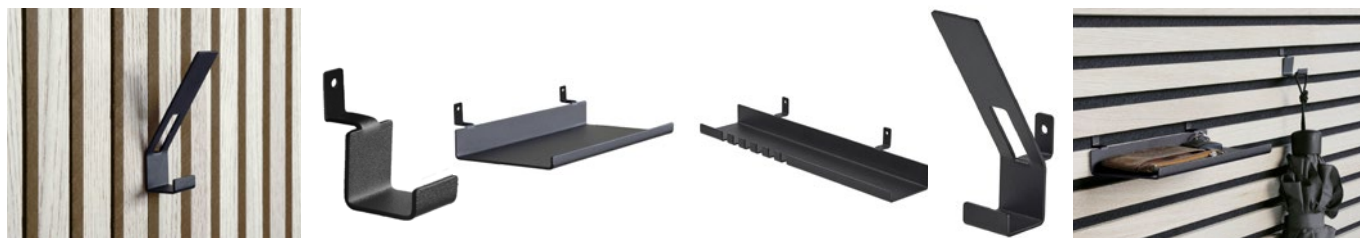
# Design hooks and wall shelves

These black-coated accessories give acoustic wall panels the finishing touch.

In homes, offices, and public spaces, acoustic panels are a popular choice for improving sound quality and enhancing interior design. With these stylish hooks and wall shelves you can transform any acoustic wall panel into a unique eye-catching feature. One of the key advantages of these DOLLE accessories is their versatility: they can be mounted on both horizontally and vertically installed panels with a minimum spacing of just 1 cm. Thanks to the neatly concealed black screws the clean and elegant look of your wall remains perfectly intact.

### Advantages

- **Sold individually:** Both the hooks (set of 2) and the wall shelves are available individually.
- **Excellent value for money:** Each set includes screws and wall plugs and is competitively priced
- **For horizontal and vertical panels:** DOLLE accessories are compatible with both horizontally and vertically installed acoustic wall panels.
- **Black screws:** The screws are discreetly concealed within the black acoustic backing material.
- **Universally compatible:** Suitable for acoustic panels with a minimum spacing of 1 cm.
- **Visually appealing:** The black finish and elegant design preserve the stylish look of the acoustic panels.



### Product features

- Steel construction
- Black lacquered finish
- Including all required screws and wall plugs
- Suitable for both horizontal and vertical panels
- Compatible with acoustic panels (min 1 cm spacing)
- Material thickness 1,5 mm

### Article numbers

- 0512.100.1000 - hooks
- 0512.100.1005 - coat hooks
- 0512.100.1010 - wall shelf LINE
- 0512.100.1015 - wall shelf KEY

### Application areas

- Living room
- Bedroom
- Study / Home office
- Hallway
- Restaurant
- Hotel
- Showroom
- Reception area
- Lobby